

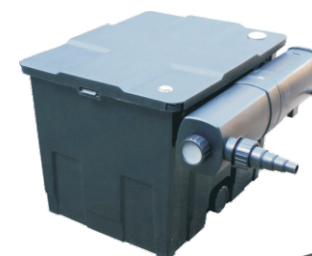


CBF-350/350B/350C/550 POND BIO FILTER **INSTRUCTION**

Before operating this appliance, please read this instruction manual completely and keep it handy for future reference!



CBF-350B



CBF-350

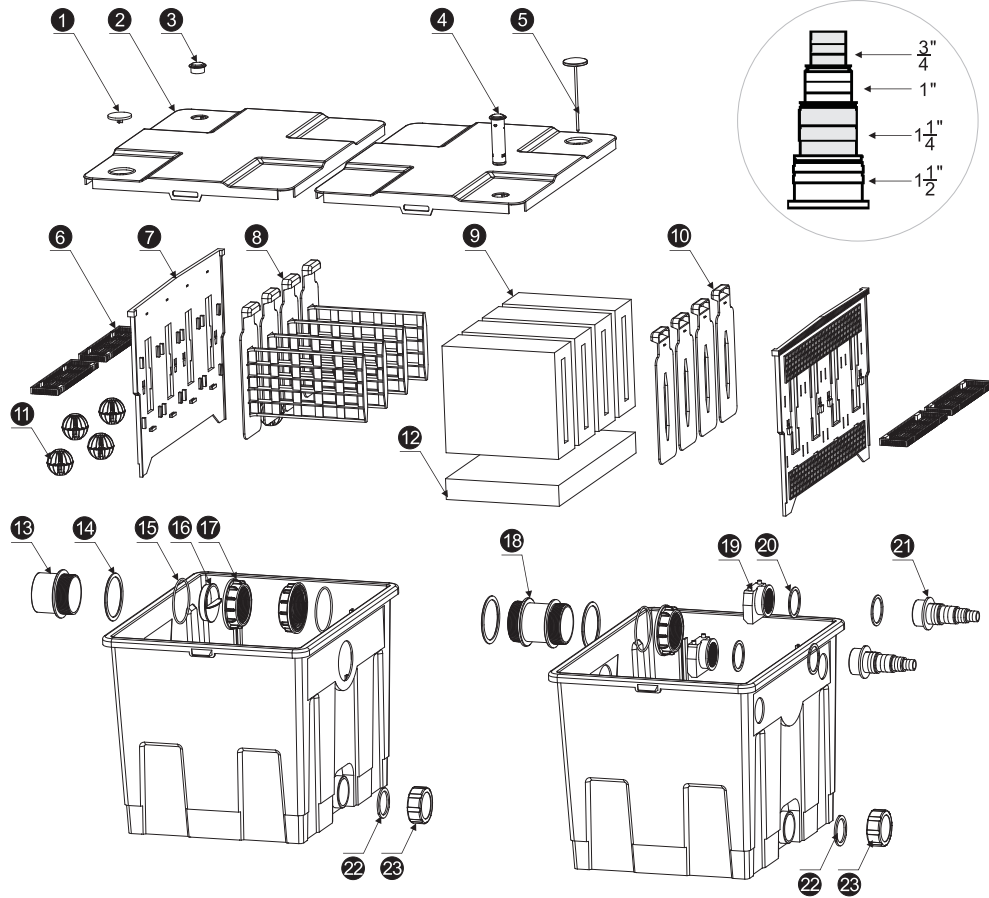


CBF-550



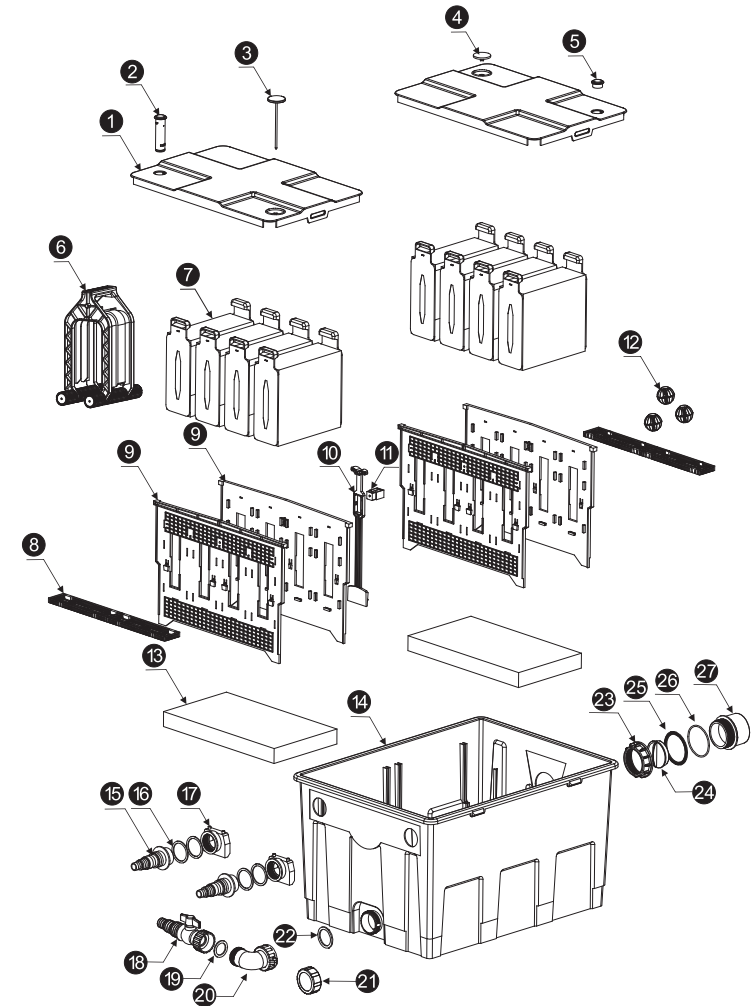
CBF-350C

CBF-350/350B/350C



| | | | |
|----|----------------|----|---------------------|
| 1 | BIG COVER | 13 | OUTLET |
| 2 | BOX COVER | 14 | OUTLET GASKET |
| 3 | SMALL COVER | 15 | OUTLET O-RING |
| 4 | TURBIDIMETER | 16 | ADJUSTER |
| 5 | THERMOMETER | 17 | OUTLET NUT |
| 6 | RAIL FENCE | 18 | CONNECTING FLANGE |
| 7 | INSERT PLATE | 19 | OXYGEN EXPORT |
| 8 | SPONGE HOLDER | 20 | INLET GASKET |
| 9 | SPONGE | 21 | INLET |
| 10 | PRESSING PLATE | 22 | DRAIN OUTLET GASKET |
| 11 | BIO BALL | 23 | DRAIN COVER |
| 12 | FILTER PAD | | |

CBF-550



| | | | | | | | |
|---|---------------|----|--------------|----|-----------------------|----|-----------------------|
| 1 | BOX COVER | 8 | RAIL FENCE | 15 | INLET | 22 | DRAIN OUTLET GASKET 2 |
| 2 | TURBIDIMETER | 9 | INSERT PLATE | 16 | INLET GASKET | 23 | OUTLET NUT |
| 3 | THERMOMETER | 10 | HANDLE | 17 | OXYGEN EXPORT | 24 | ADJUSTER |
| 4 | BIG COVER | 11 | FIXED BUTTON | 18 | BALL VALVE | 25 | OUTLET O-RING |
| 5 | SMALL COVER | 12 | BIO BALL | 19 | DRAIN OUTLET GASKET 1 | 26 | OUTLET GASKET |
| 6 | CLEANING TOOL | 13 | FILTER PAD | 20 | ELBOW PIPE | 27 | OUTLET |
| 7 | SPONGE | 14 | CONTAINER | 21 | DRAIN COVER | | |

1.Features

- (1)Efficient purification ultraviolet stabilization before the filtration, purification more effective.
- (2)With super powerful bio-filtration, bulky filter, multi-chamber water carriage, easier installation and cleaning with modular structure.
- (3)The special water path design, which will do the first step to filtrate water. That will reduce pressure of sponge filtration system and do less maintenance.
- (4)The special bracket design for filter sponges will make it easy to wash.

2.Work principle

It use water sedimentation, mechanical filtration and bacilli in bio materials which can separate and decompose injurant things to do good filtration.

3.Basic parametric

Products of this series are suitable for filtering garden pool and koi pool. Use correctly and the pool water will be purified effectively.

| BIO FILTERS | CBF-350 | CBF-350B | CBF-350C | CBF-550 |
|-------------------------------|------------------------------------|------------------------------------|------------------------------------|------------------------------------|
| Dimension in mm | 540x402x400mm | 860x540x400mm | 1280x540x400mm | 690x518x400mm |
| Max flow-through | 8000L/h | 12000L/h | 12000L/h | 12000L/h |
| Inlet hose adapter | $\frac{3}{4}$ " ~1 $\frac{1}{2}$ " | $\frac{3}{4}$ " ~1 $\frac{1}{2}$ " | $\frac{3}{4}$ " ~1 $\frac{1}{2}$ " | $\frac{3}{4}$ " ~1 $\frac{1}{2}$ " |
| Outlet(mm) | 70/50/38mm | 70/50/38mm | 70/50/38mm | 70/50/38mm |
| No. of filter mats | 1 | 2 | 3 | 2 |
| No. of filter thick sponges | 2 | 4 | 8 | 4 |
| No. of filter thin sponges | 2 | 4 | 4 | 4 |
| Suitable for ponds with fish | 6m ³ | 12m ³ | 24m ³ | 12m ³ |
| Suitable for decorative ponds | 12m ³ | 24m ³ | 48m ³ | 24m ³ |
| Connection to UV light | CUV-2-3-6 series (18W) | CUV-2-3-6 series (24W) | CUV-2-3-6 series (36W) | CUV-2-3-6 series (24W) |

| Bio-Filters | CBF-350 | | CBF-350B/550 | | CBF-350C | |
|-------------|------------------------|-----------------|------------------------|------------------|------------------------|------------------|
| | CUV-2-3-6 series (18W) | | CUV-2-3-6 series (24W) | | CUV-2-3-6 series (36W) | |
| | Decorative ponds | Ponds with fish | Decorative ponds | Ponds with fish | Decorative ponds | Ponds with fish |
| 4000L/h | 6m ³ | 4m ³ | -- | -- | -- | -- |
| 6000L/h | 9m ³ | 5m ³ | 12m ³ | 6m ³ | -- | -- |
| 8000L/h | 12m ³ | 6m ³ | 16m ³ | 8m ³ | 24m ³ | 12m ³ |
| 10000L/h | -- | -- | 20m ³ | 10m ³ | 36m ³ | 18m ³ |
| 12000L/h | -- | -- | 24m ³ | 12m ³ | 48m ³ | 24m ³ |

A guide to filtration turn over

| | |
|--|-----------------------------|
| No fish content | Should be circulated 4/day |
| A guide pond with normal fish content(1kg/m ³) | Should be circulated 6/day |
| A guide containing more than 1kg fish per m ³ | Should be circulated 12/day |

4.Installation

- (1)Open the head cover, pull out bio sponge compound, and wash it.
- (2)Wash all of the filter media.
- (3)Secure germicidal lamp.
- (4)Put in clean filter media exactly.
- (5)Connect pipe-outlet of the pump to inlet of the germicidal lamp, then connect outlet pipe of the filter to the pond.
- (6)Insert the power plug, the filter begins to work.

5.Operation modes

- (A)Pool-side operation(Ideal position)advantage:close to surface, less flow.
Disadvantage: put in shade is so difficult.
- (B)Operation in shade--draining through pipe. Advantage: one pump can runs waterfall and filter. Disadvantage: too much flow loss.

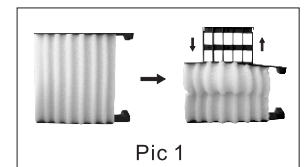
6.Operation

- (1)Water outlet of the filter must be higher than water surface of the pool.
- (2)This filter is mainly driven by the pump. It is turned on/off by plugging in/out.
- (3)If the filter is installed in mode B, after the pump runs and water is pumped in the filter, check if the water can be drained out in time. If not, pull out the plug, make the platform to support the filter higher or add a valve to the water inlet pipe to control the flow.
- (4)The platform must be strong enough to support the filter full of water. To avoid water flow be block by dirt, the filter media must be cleaned regularly.
- (5)30-60 minutes after the pump runs, check if there is water leakage or other problems. If happens any trouble, immediately pull out the plug, get rid of the trouble, then restart the machine.
- (6)The inlet can be connect to $\frac{3}{4}$ "~1 $\frac{1}{2}$ " hose, according to the hose diameter, cut off the inlet which is too small, or it will affect the flow.
- (7)Nutriments&nitrifiers aqua is the ideal biological starter for rapid build of filter bacteria. Pull it into the filter media before the filter working.
- (8)Install the uvc lamp before the filter can kill the algae and bacteria, so it can be make the water clean and healthy.

7.Cleaning

Please observe the actual condition of the fish pool and wash it accordingly, in order that no dirt or filth block water flow. If the pool is normal ecological condition and without too much filth, it should wash the filter media every 30 days. The pump should be washed if water flow becomes less.

- (1)Turn off the pump and open the cover.
- (2)Wash the filter media with tap water or other clean water, do not use detergent or soap to wash the filter media directly.
- (3)It is not necessary to renew all the filter media at the same time, instead, they should be renewed separately within 2-3 weeks.
- (4)If the bottom of the water is too dirty, discharge the water out of the filter.
- (5)Open the limber hole at the bottom, drain out dirty water.
- (6)Reassemble it please.



Pic 1

8.The instruction of germicidal lamp please take other instruction.

Warranty Registration Form

You Must Fill In All For Warranty Validation.

WARRANTY CARD

| | | | |
|---------------------|--|------------------|----------------|
| Model No. | | Date of purchase | |
| User | | Address | |
| Zipcode | | Phone | Contact person |
| Retailer | | | |
| Maintenance Records | | | |
| Y M D | | | |

Note: This warranty card is for your own benefit along with the timely service from our company.

- 1.This card is to ensure quality service on products form our company.
- 2.The warranty term is valid for 1 year since the date of purchase.
- 3.Quick-ware parts have limited warranty guarantee.
- 4.Accidental damage will be exempted.

WARRANTY CARD(Leaf For Retailer)

| | | | |
|-----------|--|------------------|----------------|
| Model No. | | Date of purchase | |
| User | | Address | |
| Zipcode | | Phone | Contact person |
| Retailer | | | |

The Register Of Water Quality Test

| Date | Temperature | Watercolor | Ph | Co ₃ ²⁻ | Totalhardness | NH ₃ /NH ₄ | No ₂ ⁻ |
|------|-------------|------------|----|-------------------------------|---------------|----------------------------------|------------------------------|
| | | | | | | | |
| | | | | | | | |
| | | | | | | | |
| | | | | | | | |
| | | | | | | | |
| | | | | | | | |
| | | | | | | | |
| | | | | | | | |
| | | | | | | | |
| | | | | | | | |
| | | | | | | | |
| | | | | | | | |
| | | | | | | | |
| | | | | | | | |
| | | | | | | | |
| | | | | | | | |
| | | | | | | | |
| | | | | | | | |
| | | | | | | | |
| | | | | | | | |
| | | | | | | | |
| | | | | | | | |
| | | | | | | | |
| | | | | | | | |
| | | | | | | | |
| | | | | | | | |
| | | | | | | | |
| | | | | | | | |
| | | | | | | | |
| | | | | | | | |
| | | | | | | | |
| | | | | | | | |
| | | | | | | | |
| | | | | | | | |
| | | | | | | | |